

## SEGA GELBVIEH AND BALANCER

Production Sale

March 2nd, 2024

Viewing starts at 10:30 a.m.

Lunch at High Noon

Wow time flies, it seems like just yesterday we were getting things put together for the first sale back here at the home place! This is the 17<sup>th</sup> year we've hosted our Annual Production Sale at the farm. We so appreciate our long-time customers and always enjoy getting to know our new customers, friends and their operations.

The offering this spring is loaded with a great set of calving ease, maternal and performance bulls and replacement females. We are and have always been an operation fully involved in agriculture both crop farming and livestock, we are committed to producing cattle that will benefit your operation in this dry desert country that we all live and work in.

The bulls have been on a high roughage ration since weaning consisting of silage, ground sudan grass, ground alfalfa and a small protein supplement. They have performed very well considering the cold, winter conditions they have been through.

Feel free to call either one of us with any questions about the offering. We are here to help you with your bull buying decisions.

Jon Flack will once again be calling our sale, he does a great job for us.

As always, we stand behind these cattle and want them to go out and do a great job for you our valued friends and customers!

Regards, Steve and Gail

**Steve and Gail Fiolkoski – SEGA Gelbvieh**

16509 WCR 86

Pierce, Colorado 80650

Gail's cell: 970-590-4862

Steve's cell: 970-381-0600

Jon Flack – Auctioneer – 970-590-5654

Joe Winslow – Phone Bids - 970-301-6119

- **Health:** The cattle have had all their vaccinations and will be semen tested and available for interstate shipment within the U.S.

- **Terms:** Cash or cashable check on sale day unless other arrangements have been made with us.

- **Delivery:** We will deliver your purchases at no cost to you within 250 miles. We will keep the bulls until April 1<sup>st</sup>, at no charge. Feed cost after April 1<sup>st</sup> will be \$2.50/per day. We will deliver the bulls to you at an agreed upon time. The bulls will be cared for as if they were ours, but we cannot guarantee against sickness, injury, or death.

- **Transfers:** Cattle with registration papers will be transferred to the new owner.

- **Guarantee:** All bulls in the sale are guaranteed to be breeders if not allowed to run with the herd until at least 14 months of age, and if not subjected to gross negligence by the purchaser.

- **Liability:** You attend the sale at your own risk and we will not be responsible for any accidents or injuries that might occur.

### Directions to the Farm:

- From Ault, Colorado: 2 miles north on Highway 85, then 1/8 mile west on County Road 86. From Pierce, Colorado: 2 miles south on Highway 85 then 1/8 mile west on County Road 86.

**In case of bad weather, please call ahead.**

**BID LIVE ONLINE!**

**LiveAuction World.com**

Visit:

[https://www.liveauctionworld.com/SEGA-Gelbvieh\\_ae2637](https://www.liveauctionworld.com/SEGA-Gelbvieh_ae2637)



Register Today:

1. Create an account at the above link – 24 hours prior to auction.
2. Click on Become a Bidder
3. Tune into sale and make your purchase.

Auction Questions:

Cari Flack – 303-419-0886

## Reference Sires

### **BMCE MAC FRONTRUNNER 468J**

CE	BW	WW	YW	MK
12	-1.0	78	127	26

### **OVER JINGLE**

CE	BW	WW	YW	MK
12	-0.3	73	115	20

### **RAIL MR PROBITY M 8114F**

CE	BW	WW	YW	MK
16	-1.8	61	96	23

### **RROG OVER GAME DAY 443G**

CE	BW	WW	YW	MK
10	1.3	73	116	24

### **RROG OVER FREIGHT TRAIN 42F**

CE	BW	WW	YW	MK
13	-0.6	75	111	21

# Crow Valley Panels LLC



Livestock  
Containment  
“Priced for the  
Working Man”

*Your Choice For:  
Corrals, Feedlots, Dairies,  
Arena's*

¾ miles south of Junction Hwy 14 & 392  
43251 Highway 392 – Briggsdale, CO

Panel Yard 970-656-3559  
Randy's Cell 970-381-5002

Crow Valley Panels is donating  
a print by artist Kenneth Wyatt  
Entitled  
“An Evening with Mama”  
to buyer of the high selling bull!



# BALANCERS

1

## SEGA KIO 751K

Balancer - 50% GV  
Red, Double Polled  
DOB: 2-5-22 PAP: 35

Birth Weight: 84 - Adj. 205-Day Wt: 617

RROG OVER GAME DAY  
443G

OVER DRAFT PICK 413D  
OGSG 028X

SEGA HIGH CLASS 7751H

JRI MARSHALL 214X2  
SEGA 7751AF

CE	BW	WW	YW	MK	DOC	CW	RE	MB
13	0.1	69	108	19	15	32	.27	.42

Here is a two year old Red Game Day son. He was deferred on his semen test last spring at sale time so we held him over. He is backed by a great Marshall daughter.

2



## SEGA LOOP 1900L

Balancer – 75% GV  
Red, Double Polled  
DOB: 1-5-23 PAP: 43

Birth Weight: 78 - Adj. 205-Day Wt: 736

RROG OVER FREIGHT  
TRAIN 42F

OGSG OVER DRIVE TRAIN 43D  
EMKG MISS 42W 42Z

SEGA 1901D

JCCR BAR GT PANCHITO 8Z  
SEGA 1901Y

CE	BW	WW	YW	MK	DOC	CW	RE	MB
15	-2.7	65	92	21	9	36	.39	.29

Here's a good red calving ease bull with a great mother backing him. Loop has a little more age on him and should make a heifer breeding prospect.

**3****SEGA LONGMIRE 360L**

Balancer – 75% GV  
 Black, Double Polled  
 DOB: 1-8-23 PAP: 44

Birth Weight: 84 Adj. Wean Wt: 763

RROG OVER FREIGHT TRAIN 42F  
 OGSF OVER DRIVE TRAIN 43D  
 EMKG MISS 42W 42Z

SEGA ADORE 360A  
 RID R EASTWOOD 907W  
 JCGR BAR GT MS BELLE 360U

CE	BW	WW	YW	MK	DOC	CW	RE	MB
13	-0.8	63	91	21	9	35	.43	.27

This dude is all bull! His full brother was a highlight in last year's sale.

**5****SEGA LAPTOP 1853L**

Balancer - 75% GV  
 Black, Double Polled  
 DOB: 1-20-23 PAP: 41

Birth Weight: 74 - Adj. 205-Day Wt: 653

RAIL MR PROBITY M 8114F  
 JRI PROBITY 245D28  
 TAU MS IN FOCUS 1063Y

SEGA ALLI 1853A  
 RID R EASTWOOD 9071  
 SEGA XIA 185X

CE	BW	WW	YW	MK	DOC	CW	RE	MB
16	-2.5	54	81	25	13	26	.37	.17

This black 75% "Matt" calf sports some great calving ease figures. His Eastwood dam brings a good one home every fall.

**4****SEGA LAST CALL 9117L**

Balancer - 75% GV  
 Double Black, Double Polled  
 DOB: 1-12-23 PAP: 40

Birth Weight: 84 - Adj. 205-Day Wt: 762

RROG OVER FREIGHT TRAIN 42F  
 OGSF OVER DRIVE TRAIN 43D  
 EMKG MISS 42W 42Z

SEGA 9117E  
 VRT LAZY TV SAM U451  
 SEGA 911C

CE	BW	WW	YW	MK	DOC	CW	RE	MB
14	-0.9	71	103	27	10	36	.61	.36

The "911" cow family is a mainstay here. This calf is long and really correct in his makeup.

**6****SEGA LEVER ACTION 746L**

Balancer - 75% GV  
 Red, Double Polled  
 DOB: 1-29-23 PAP: 40

Birth Weight: 88 - Adj. 205-Day Wt: 690

RROG OVER FREIGHT TRAIN 42F  
 OGSF OVER DRIVE TRAIN 43D  
 EMKG MISS 42W 42Z

RROG RROG ELIZABETH 746E  
 GGGE 3G ZIP LINE 266Z  
 RROG BOUNTIFUL 496B

CE	BW	WW	YW	MK	DOC	CW	RE	MB
12	-0.4	71	103	18	8	36	0.5	.21

Well rounded EPD package on this good red Train son. His dam was our pick from the Kansas Association sale a few years ago.



**7****SEGA LINGER 4953L**

Balancer - 63% GV  
 Black, Double Polled  
 DOB: 1-31-23 PAP: 42

Birth Weight: 82 - Adj. 205-Day Wt: 619

OVER JINGLE 405J

RROG OVER FINAL LINE 16F  
 OGSB BREE 4208B

SEGA 495D

JRI EXTRA EXPOSURE 285L71  
 SEGA SNAZZIE 495S

CE	BW	WW	YW	MK	DOC	CW	RE	MB
12	-0.5	62	96	17	12	25	.43	.07

This is the first crop of "Jingle" calves, we're sure happy with the type he makes.

**8****SEGA LATCH 7758L**

Balancer - 50% GV  
 Double Black, Double Polled  
 DOB: 1-31-23 PAP: 42

Birth Weight: 84 - Adj. 205-Day Wt: 701

RAIL MR PROBITY M 8114F

JRI PROBITY 254D28  
 TAU MS IN FOCUS 1063Y

SEGA 7758F

OGSG CARE FREE 110C  
 SEGA ZAPPY 775Z

CE	BW	WW	YW	MK	DOC	CW	RE	MB
14	-0.5	62	95	21	13	26	.19	.26

The 775 Cow Family has been a mainstay here for 24 years. This good Matt son would be a great fit on some straight, english bred cattle.

**"I can't thank you guys enough for raising such amazing quality cattle! We absolutely love the bull we got from you this spring.**

**He has the genetics, the look and the personality that makes it easy to handle.**

**Can't wait to see his babies."**

**Jamie and Mandy Shoemaker  
 Walden, Colorado**

**9****BRNK 1853L**

Commercial Balancer  
 Black, Double Polled  
 DOB: 2-3-23 PAP: 41

Birth Weight: 83 - Actual Wean Weight: 698

RROG OVER FREIGHT  
 TRAIN 42F

OGSG OVER DRIVE TRAIN 43D  
 EMKG MISS 42W 42Z

SEGA DILLE 1853D

C-BAR CONTOUR  
 SEGA AALI 1853A

CE	BW	WW	YW	MK	DOC	CW	RE	MB
13	-1.5	63	96	23	10	32	.38	.37

Here is a commercial bull from our good friend Tom Brink. His dam is an easy fleshing Cbar Contour red balancer. She sure is a producer.

**10****SEGA LEAGUER 1295L**

Balancer - 50% GV  
 Black, Double Polled  
 DOB: 2-5-23 PAP: 36

Birth Weight: 75 - Adj. 205-Day Wt: 709

OVER JINGLE 405J

RROG OVER FINAL LINE 16F  
 OGSB BREE 4208B

SEGA 1295D

SEGA 8A  
 SEGA 1295Z

CE	BW	WW	YW	MK	DOC	CW	RE	MB
12	-0.5	63	95	18	12	24	.34	0.2

Here's a light birthweight Jingle son that was one that always caught our eye on pasture this summer.



**11****SEGA LATIGO 5060L**

Balancer - 63% GV  
 Black, Double Polled  
 DOB: 2-5-23 PAP: 39

Birth Weight: 78 - Adj. 205-Day Wt: 698

RAIL MR PROBITY M  
 8114F

JRI PROBITY 254D28  
 TAU MS IN FOCUS 1063Y

BNW PRAIRIE GAL 5060C

BGGR GRAVITY 803A  
 BNW PRAIRIE GAL STAMP 2062Z

CE	BW	WW	YW	MK	DOC	CW	RE	MB
14	-1.1	61	90	22	12	27	.32	.26

This bull's mother came out of the Wilkinson herd at Model, she sure has worked in our tough, dry country.

**12****SEGA LINE UP 856L**

Balancer - 50% GV  
 Double Black, Double Polled  
 DOB: 2-9-23 PAP: 38

Birth Weight: 81 - Adj. 205-Day Wt: 599

OVER JINGLE 405J

RROG OVER FINAL LINE 16F  
 OGSF BREE 4208B

SEGA 856H

JRI MARSHALL 214X2  
 SEGA 856F

CE	BW	WW	YW	MK	DOC	CW	RE	MB
15	-2.9	60	94	17	13	20	.26	.27

I sure like the looks of this one – he should be a great calving ease prospect. The Jingle sired calves are as correct made as you will find.

**14****SEGA LANDSCAPE 6513L**

Balancer - 75% GV  
 Double Black, Double Polled  
 DOB: 2-10-23 PAP: 37

Birth Weight: 87 - Adj. 205-Day Wt: 698

BMCE MAC FRONTRUNNER  
 468J

DLW TPG FRONTRUNNER  
 2510F  
 BMCE MAC ERICA 468B

SEGA 651E

JRI MARSHALL 214X2  
 SEGA 651C

CE	BW	WW	YW	MK	DOC	CW	RE	MB
15	-2.3	64	102	23	12	19	.43	.34

High percentage calf out of a super productive Marshall daughter that we call wide body around this outfit.

**15****SEGA LOOT 38L**

Balancer - 63% GV  
 Double Black, Double Polled  
 DOB: 2-12-23 PAP: 42

Birth Weight: 84 - Adj. 205-Day Wt: 701

RROG OVER FREIGHT  
 TRAIN 42F

OGSG OVER DRIVE TRAIN 43D  
 EMKG MISS 42W 42Z

SEGA 38E

OGSG CARE FREE 110C  
 BAG MISS BACK TRACK 38X

CE3	BW	WW	YW	MK	DOC	CW	RE	MB
13	-0.8	64	92	18	9	31	.39	.33

This will be the last crop of Freight Train calves to sell. This is one super correct bull that is wide topped and good.

**16****SEGA LANDSLIDE 7751L**

Balancer - 63% GV  
 Black, Double Polled  
 DOB: 2-12-23 PAP: 37

Birth Weight: 83 - Adj. 205-Day Wt: 691

OVER JINGLE 405J

RROG OVER FINAL LINE 16F  
 OGSB BREE 4208B

SEGA HIGH CLASS 7751H

JRI MARSHALL 214X2  
 SEGA 7751AF

CE	BW	WW	YW	MK	DOC	CW	RE	MB
14	-1	68	106	16	12	26	.36	.2

Really well rounded EPD profile on this Jingle son. His dam is an up and coming rock star here – she is big bodied and perfect uddered.

**17****SEGA LAREDO 405L**

Balancer - 63% GV  
 Red, Double Polled  
 DOB: 2-15-23 PAP: 42

Birth Weight: 87 - Adj. 205-Day Wt: 706

RROG OVER FREIGHT  
 TRAIN 42F

OGSG OVER DRIVE TRAIN 43D  
 EMKG MISS 42W 42Z

SEGA 405Y

RID R EASTWOOD 907W  
 LDR PRECISION 405

CE	BW	WW	YW	MK	DOC	CW	RE	MB
13	-1.5	60	88	21	8	36	.33	.33

Here is a red diluter free Train out of a top producing Eastwood cow. She turns 13 this year and still has a youthful look.

**18****SEGA LASSO 22L**

Balancer - 50% GV  
 Double Black, Double Polled  
 DOB: 2-18-23 PAP: 39

Birth Weight: 86 - Adj. 205-Day Wt: 687

RAIL MR PROBITY M  
 8114F

JRI PROBITY 254D28  
 TAU MS IN FOCUS 1063Y

SEGA 22B

RED FINALLY TIME 06  
 SEGA XYZA 22X

CE	BW	W	YW	MK	DOC	CW	RE	MB
14	-0.9	62	97	20	13	31	0.3	.26

This one should really pack the performance in his calves. He is a true second generation 50% balancer, his dam brings a good one to the table every year.

**19****SEGA LAZER 495L**

Balancer – 88% GV  
 Double Black, Double Polled  
 DOB: 2-19-23 PAP: 40

Birth Weight: 85 - Adj. 205-Day Wt: 700

BMCE MAC FRONTRUNNER  
 468J

DLW TPG FRONTRUNNER  
 2510F  
 BMCE MAC ERICA 468B

SEGA YARA 495Y

RID R EASTWOOD 907W  
 SEGA NIKITA 495N

CE	BW	WW	YW	MK	DOC	CW	RE	MB
12	0.1	65	97	28	11	19	.57	.28

This 88% dude is fun to look at, big down the top, deep sided and good. His dam is another 13 year old that has been a top producer here her whole career.

**20****SEGA LAGLY 9151L**

Balancer - 50% GV  
 Red, Double Polled  
 DOB: 2-21-23 PAP: 34

Birth Weight: 73 - Adj. 205-Day Wt: 601

RROG OVER GAME DAY  
 443G

OVER DRAFT PICK 413D  
 OGSB 028X

SEGA 9151J

OGSB OVER ENSHRINED 028E  
 SEGA WILLOW 915W

CE	BW	WW	YW	MK	DOC	CW	RE	MB
12	0.2	68	103	25	14	31	.33	0.4

We used the Game Day bull for a Red Balancer sire on heifers the last two years.

**21****SEGA LARRY 78L**

Commercial Balancer - 75% GV  
 Black, Double Polled  
 DOB: 2-24-23 PAP: 34

Birth Weight: 85 - Actual Wean Weight: 700

RAIL MR. PROBITY M 8114F

JRI PROBITY 254D28  
 TAU MS IN FOCUS 1063Y

SEGA 78T

RED MR FORTUNE  
 SEGA MISS ALEXIS 78G

CE	BW	WW	YW	MK	DOC	CW	RE	MB
13	1.2	61	87	23	2	23	.44	.23

Commercial Matt son here - we dropped the papers on his dam last year as we thought she was open at 16 years of age but surprised us with this guy.

**22****SEGA LIMIT 2319L**

Balancer - 63% GV  
 Double Black, Double Polled  
 DOB: 2-26-23 PAP: 37

Birth Weight: 74 - Adj. 205-Day Wt: 654

OVER JINGLE 405J

RROG OVER FINAL LINE 16F  
 OGSB BREE 4208B

SEGA 2319G

GRU MR IMPACT 921E  
 SEGA 2312B

CE	BW	WW	YW	MK	DOC	CW	RE	MB
13	-0.8	69	106	18	12	23	.48	.12

The dam of this bull is big middled and has as good of an udder as you could put on one. Jingle seems to be a great cross on our Impact daughters.

**23****SEGA LEVEL 231L**

Balancer - 75% GV  
 Double Black, Double Polled  
 DOB: 2-26-23 PAP: 36

Birth Weight: 82 - Adj. 205-Day Wt: 643

OVER JINGLE 405J

RROG OVER FINAL LINE 16F  
 OGSB BREE 4208B

SEGA 2312H

GRU MR IMPACT 921E  
 SEGA ZUNI 2312Z

CE	BW	WW	YW	MK	DOC	CW	RE	MB
13	-0.2	70	104	19	12	24	.49	.06

Here is another Jingle out of an Impact daughter. The Impact daughters are easy fleshing, impeccable uddered, calf raising jesses.



24

**SEGA LASH 911L**

Balancer - 63% GV  
Double Black, Double Polled  
DOB: 2-26-23 PAP: 40

Birth Weight: 85 - Adj. 205-Day Wt: 715

RAIL MR PROBITY M  
8114F

JRI PROBITY 254D28  
TAU MS IN FOCUS 1063Y

SEGA 911C

RID R EASTWOOD 907W  
SEGA 911W

CE	BW	WW	YW	MK	DOC	CW	RE	MB
15	-1.9	58	85	23	14	24	.32	.17

The 911 cow family has deep roots here, this calf will add some stature and performance to some moderate framed cows.

25

**SEGA LIBERTY 0812L**

Balancer - 75% GV  
Double Black, Double Polled  
DOB: 2-27-23 PAP: 38

Birth Weight: 86 - Adj. 205-Day Wt: 692

BMCE MAC FRONTRUNNER  
468J

DLW TPG FRONTRUNNER  
2510F  
BMCE MAC ERICA 468B

SEGA XYLA 0812X

RITO 616 OF 4B2 6807  
SEGA NEXUS 812N

CE	BW	WW	YW	MK	DOC	CW	RE	MB
15	-1.8	64	102	23	12	26	.61	.31

Longevity deluxe! The 812 cow family all stay in the herd into their Medicare years and this ones dam just turned 14 and is knocking on the door to calve as I write this. Longevity is a trait that always makes money in the Biz!

26

**SEGA LONG HAUL 2318L**

Balancer - 63% GV  
Double Black, Double Polled  
DOB: 3-2-23 PAP: 42

Birth Weight: 86 - Adj. 205-Day Wt: 693

OVER JINGLE 405J

RROG OVER FINAL LINE 16F  
OGSG BREE 4208B

SEGA FAYA 2318F

GGGE 3G ZIP LINE 266Z  
SEGA 2312B

CE	BW	WW	YW	MK	DOC	CW	RE	MB
13	-0.8	68	105	17	12	22	.46	.13

Here's a Jingle out of probably the easiest keeping cow line on the place! Both his dam and grand dam are big barreled, great uddered females. He will be a cow maker deluxe.

27

**SEGA LODGE 915L**

Balancer - 75% GV  
Double Black, Double Polled  
DOB: 3-2-23 PAP: 38

Birth Weight: 86 - Adj. 205-Day Wt: 702

BMCE MAC FRONTRUNNER  
468J

DLW TPG FRONTRUNNER  
2510F  
BMCE MAC ERICA 468B

SEGA WILLOW 915W

DAY 8005 NEW DAY 705  
SEGA WHISPER 915J

CE	BW	WW	YW	MK	DOC	CW	RE	MB
13	-0.4	64	98	28	9	18	.53	.29

We probably talk of longevity too much but man Lodge's dam just turned 15 and will calve right at the front of her contemp group.



**28****SEGA LOW RIDER 8563L**

Balancer - 63% GV  
 Red, Double Polled  
 DOB: 3-3-23 PAP: 40

Birth Weight: 82 - Adj. 205-Day Wt: 687

RROG OVER FREIGHT  
 TRAIN 42F

OGSG OVER DRIVE TRAIN 43D  
 EMKG MISS 42W 42Z

SEGA 856F

SEGA COLD AS ICE 3115C  
 SEGA DALLIE 1856D

CE	BW	WW	YW	MK	DOC	CW	RE	MB
14	-2.1	63	92	20	10	32	.38	.39

This is one cool Red bull! We sure are going to miss bringing the Freight Train cattle for your evaluation. This big barreled, easy moving red bull is backed by a great Cold as Ice daughter.

**29****SEGA LARIAT 311L**

Balancer - 50% GV  
 Double Black, Double Polled  
 DOB: 3-5-23 PAP: 34

Birth Weight: 85 - Adj. 205-Day Wt: 626

RAIL MR PROBITY M 8114F

JRI PROBITY 245D28  
 TAU MS IN FOCUS 1063Y

SEGA 311F

GGGE 3G ZIP LINE 266Z  
 SEGA TAYLOR MADE 311T

CE	BW	WW	YW	MK	DOC	CW	RE	MB
14	-1.2	62	94	20	13	26	.31	.24

These Mr. Probity (Matt) cattle are all made right. This guy is backed by a super Zipline daughter that traces back to one of our herd matriarch Magnitude cows. Magnitude made great mother cows.

**30****SEGA LAVA 4053L**

Balancer - 38% GV  
 Double Black, Double Polled  
 DOB: 3-18-23 PAP: 37

Birth Weight: 86 - Adj. 205-Day Wt: 651

RROG OVER FREIGHT  
 TRAIN 42F

OGSG OVER DRIVE TRAIN 43D  
 EMKG MISS 42W 42Z

SEGA 405F

SCHIEFELBEIN EFFECTIVE 61  
 SEGA 405Y

CE	BW	WW	YW	MK	DOC	CW	RE	MB
15	-1.8	63	97	22	9	36	.30	.48

This may not be the biggest, stoutest bull in the pen but he darn sure may be the most correct, easy moving of the bunch. His dam was a sweet Effective daughter. We lost her this winter.

**31****SEGA LATITUDE 4873L**

Balancer - 63% GV  
 Double Black, Double Polled  
 DOB: 3-19-23 PAP: 37

Birth Weight: 71 - Adj. 205-Day Wt: 626

OVER JINGLE 405J

RROG OVER FINAL LINE 16F  
 OGSG BREE 4208B

SEGA 487H

RROG OVER FREIGHT TRAIN 42F  
 SEGA 487E

CE	BW	WW	YW	MK	DOC	CW	RE	MB
12	-0.6	71	107	19	11	32	.43	.18

This is the youngest calf in the sale but man he is cool! His dam is a fun to look at Train daughter. This should be on your list if you need a black calving ease type. I like him.



Meat In Day 2022

# HEIFERS

32-36

Group of five Black commercial heifer calves - right out of our replacement pen.



Notes:

*Check out the Bull Videos!*

*Youtube:*

*SEGA Gelbvieh –  
Bull Sale March 2, 2024*

## Bull Selection Guide:

Use this guide to help you decide what type of bull may work best with your current cowherd makeup. An "X" marks our suggested bull type.

My Cowherd Makeup	Purebred or High Percentage Balancer	Mid-Range Balancer	Low Percentage Balancer
Mostly British-based (Angus, Red Angus, or Hereford)	X	X	
Equal blend of Continental and British Breeds	X	X	X
High percentage Continental (Gelbvieh, Limousin, Charolais, or Simmental)		X	X

**Purebred Gelbvieh or High Percentage Balancer is 63% Gelbvieh or higher. These bulls will add muscle and red meat yield along with great maternal values.**

**Mid-Range Balancers are 38% to 63% Gelbvieh. Use these bulls to maintain feedlot performance and carcass value, without losing the maternal edge.**

**Low Percentage Balancer is 38% Gelbvieh or less. Use these bulls to add carcass value and calving ease.**



## Herd Health Program:

Birth	7-Way and Inforce
Branding	Bovishield Gold 5, 7-Way
Pre-Weaning	Bovishield Gold 5, One Shot
Weaning	Bovishield Gold-5, 7-Way with Somnus, Multimin 90
At Semen Test	BoviShield Gold VL5
Pre-Breeding	BoviShield Gold VL5
Parasites controlled with Ivermectin pour-on.	



## Thanks

We owe a big THANKS to our consulting veterinarian Shawn Bott DVM for keeping the herd healthy. To Lori and Lyndsey Stevens for all their help putting the sale book together and for the wonderful video presentation.

*Thank You for Coming!*



## PAP Risk Factor

Moderate Elevation Test Chart  
PAP Test Conducted at Elevation 4000-5500 ft.  
(70% Repeatable, Predictive Value)

PAP Score	Use at Low Elev. (<4000 feet)	Use at Moderate Elev. (4000-5500 feet)	Use at High Elev. (5500 – 7500 feet)	Use at Extreme (>7500 feet)
34-39	Low Risk	Low Risk	Low Risk	Low Risk
40-45	Low Risk	Low Risk	Moderate Risk	Moderate Risk
46-49	Moderate Risk	Moderate Risk	High Risk	High Risk
≥50	Moderate Risk	High Risk	Do Not Use	Do Not Use

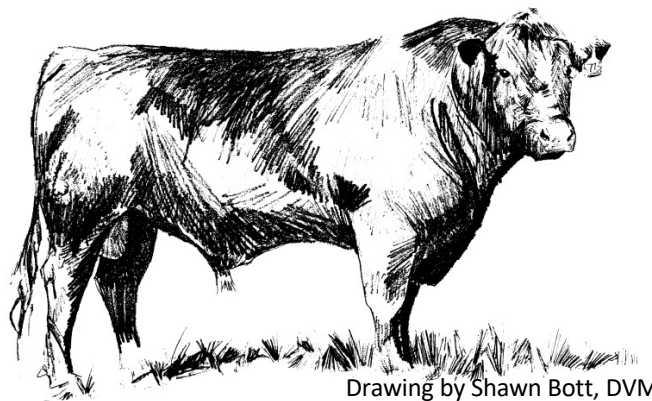
## Care of your yearling bulls:

We would encourage you to take a little extra special care of your investment(s). Yearling bulls are still growing and we all expect a lot out of them. Limit the breeding season and number of cows that they will have to service. Do not turn young bulls out in the same pasture with mature bulls. A yearling in good condition can be expected to service 15-25 cows in his first season, but he will need to be brought in early and given a little extra care after all that work. Yearlings will start losing their teeth at 15 to 18 months of age and need a little **TLC** if you expect them to grow and develop to their full potential. A little extra care up front will make your purchases last a lot longer and also make for healthier, better bulls down the trail!

When you first turn your bulls out, watch them and make sure that they are getting the job at hand done. Also, if they start getting a little run down rest them or give them a little extra energy, it will pay dividends in the long run!



The PAP Crew!



**Put a pencil to our bulls,  
you'll like what you see!**