

Welcome to our 18<sup>th</sup> annual bull sale here at the home place. We truly appreciate both our long-time customers and also all the new folks we have got to know over the years!

The sale this year is a week later than usual as we had a scheduling conflict with our auctioneer, Jon Flack, he has a Safari Club auction to work on the 1<sup>st</sup> so we have moved the sale back a week to March 8th as we wouldn't want anyone other than our good friend Jon to sell our sale!

With the drought of 2024 and having to dry lot the majority of the cattle last summer, you will see fewer cattle in the event this year. This is a good set of bulls and heifers that we have confidence in and feel they will go out and sire the market toping kind of feeders and also make extremely fertile, maternal replacement females. There will be a couple good bulls in the offering from our friends Ryan and and Nikki at Gallatin Gelbvieh along with a few heifer calves from them.

Most of you already know and understand that we develop these cattle on a slow and steady program based on a diet of ground alfalfa hay, corn silage, a good protein supplement and a very small amount of flaked corn. We feel this is in the best interest of both the cattle and our customers to create seedstock that are not fat but fit and ready to go out and get their job done.

Feel free to call us with any questions on the offering, and as always we truly look forward to seeing you all on March 8<sup>th</sup>.

Rest assured that we stand behind these cattle and are here to assist you in any way we can.

Regards, Steve and Gail

**Steve and Gail Fiolkoski – SEGA Gelbvieh**

16509 WCR 86

Pierce, Colorado 80650

Gail's cell: 970-590-4862

Steve's cell: 970-381-0600

Jon Flack – Auctioneer – 970-590-5654

Joe Winslow – Phone Bids - 970-301-6119

## **SEGA GELBVIEH AND BALANCER**

**Production Sale**

**March 8th, 2025**

**Viewing starts at 10:30 a.m.**

**Lunch at High Noon**

- **Health:** The cattle have had all their vaccinations and will be semen tested and available for interstate shipment within the U.S.

- **Terms:** Cash or cashable check on sale day unless other arrangements have been made with us.

- **Delivery:** We will deliver your purchases at no cost to you within 250 miles. We will keep the bulls until April 1<sup>st</sup>, at no charge. Feed cost after April 1<sup>st</sup> will be \$2.50/per day. We will deliver the bulls to you at an agreed upon time. The bulls will be cared for as if they were ours, but we cannot guarantee against sickness, injury, or death.

- **Transfers:** Cattle with registration papers will be transferred to the new owner.

- **Guarantee:** All bulls in the sale are guaranteed to be breeders if not allowed to run with the herd until at least 14 months of age, and if not subjected to gross negligence by the purchaser.

- **Liability:** You attend the sale at your own risk and we will not be responsible for any accidents or injuries that might occur.

### **Directions to the Farm:**

- From Ault, Colorado: 2 miles north on Highway 85, then 1/8 mile west on County Road 86. From Pierce, Colorado: 2 miles south on Highway 85 then 1/8 mile west on County Road 86.

**In case of bad weather, please call ahead.**

**BID LIVE ONLINE!**

**LiveAuction World.com**

Visit:

[https://www.liveauctionworld.com/SEGA-Gelbvieh\\_ae2637](https://www.liveauctionworld.com/SEGA-Gelbvieh_ae2637)



Register Today:

1. Create an account at the above link – 24 hours prior to auction.
2. Click on Become a Bidder
3. Tune into sale and make your purchase.

Auction Questions:

Cari Flack – 303-419-0886

## Reference Sires

### BNW PLAINSMAN KIP 2118K

| CE | BW   | WW | YW | MK |
|----|------|----|----|----|
| 15 | -0.7 | 64 | 88 | 22 |

### GATU JET 2237J

| CE | BW   | WW | YW | MK |
|----|------|----|----|----|
| 15 | -0.3 | 67 | 97 | 20 |

### OVER JINGLE 405J

| CE | BW   | WW | YW  | MK |
|----|------|----|-----|----|
| 15 | -1.3 | 69 | 111 | 21 |

### RAIL MR PROBITY M 8114F

| CE | BW   | WW | YW | MK |
|----|------|----|----|----|
| 15 | -1.4 | 62 | 97 | 19 |

### RROG OVER FREIGHT TRAIN 42F

| CE | BW   | WW | YW  | MK |
|----|------|----|-----|----|
| 13 | -0.2 | 72 | 110 | 13 |

### SEGA 3111J

| CE | BW  | WW | YW  | MK |
|----|-----|----|-----|----|
| 14 | 0.4 | 73 | 113 | 17 |

# Crow Valley Panels LLC



Livestock  
Containment  
“Priced for the  
Working Man”

*Your Choice For:  
Corrals, Feedlots, Dairies,  
Arena's*

¾ miles south of Junction Hwy 14 & 392  
43251 Highway 392 – Briggsdale, CO

Panel Yard 970-656-3559  
Randy's Cell 970-381-5002

Crow Valley Panels is donating  
a print by artist Tyler Crow  
Entitled  
“Falls Works on the 101”  
to buyer of the high selling bull!



# BALANCERS

1

## SEGA LATITUDE 4873L

Balancer - 63% GV  
Double Black, Double Polled  
DOB: 3-19-23 PAP: 37

Birth Weight: 71 - Adj. 205-Day Wt: 626

OVER JINGLE 405J

RROG OVER FINAL LINE 16F  
OGSG BREE 4208B

SEGA 487H

RROG OVER FREIGHT TRAIN 42F  
SEGA 487E

| CE | BW   | WW | YW | MK | DOC | CW | RE  | MB  |
|----|------|----|----|----|-----|----|-----|-----|
| 15 | -2.2 | 63 | 98 | 17 | 11  | 29 | .34 | .21 |

Here is a coming 2 year old Jingle calf that has great calving ease and birth EPDs along with a real stylish soft made look.

2

## SEGA 2318JL

Balancer – 50% GV  
Black, Double Polled  
DOB: 4-18-23

Birth Weight: 68 - Adj. 205-Day Wt: 751

SEGA 3111J

RAIL MR PROBITY M 8114F  
SEGA 311F

SEGA 2318J

RAIL MR PROBITY M 8114F  
SEGA FAYA 2318F

| CE | BW   | WW | YW  | MK | DOC | CW | RE  | MB  |
|----|------|----|-----|----|-----|----|-----|-----|
| 14 | -0.9 | 65 | 100 | 14 | 13  | 24 | .26 | .24 |

Coming 2-year old backed by the 2318 cow family – this guy has a balanced set of EPDS and is a big middled, free moving 311J son.

3

**BRNK 7340L**

Commercial Balancer  
Double Black, Double Polled  
DOB: 11-28-23

Birth Weight: 85 Adj. Wean Wt: 686

RAIL MR PROBITY M 8114F JRI PROBITY 254D28  
TAU MS IN FOCUS 1063Y

BRNK 7340

| CE | BW | WW | YW | MK | DOC | CW | RE | MB |
|----|----|----|----|----|-----|----|----|----|
| -  | -  | -  | -  | -  | -   | -  | -  | -  |

This is a stout made commercial bull from Tom Brink who has a few cows here at our place. This longer age bull can cover a lot of cows.

4

**SEGA MONGO 360M**

Balancer - 63% GV  
Black, Double Polled  
DOB: 1-6-24

Birth Weight: 86 - Adj. 205-Day Wt: 728

RAIL MR PROBITY M8114F JRI PROBITY 254D28  
TAU MS IN FS 1063Y

SEGA ADORE 360A RID R EASTWOOD 907W  
JCGR BAR GT MS BELLE 360U

| CE | BW   | WW | YW | MK | DOC | CW | RE  | MB  |
|----|------|----|----|----|-----|----|-----|-----|
| 14 | -1.1 | 56 | 83 | 20 | 13  | 25 | .25 | .17 |

Mongo is a thick made Mr. Probit (Matt) calf. You'll want to keep the daughters out of this one – his dam is a never miss Eastwood daughter.



Meat In Day 2022

5

**SEGA MVP 347M**

Balancer - 75% GV  
Black, Double Polled  
DOB: 1-8-24

Birth Weight: 85 - Adj. 205-Day Wt: 724

RROG OVER FREIGHT TRAIN 42F OGSF OVER DRIVE TRAIN 43D  
EMKG MISS 42W 42Z

SEGA 347E SEGA 8A  
SEGA RED 034X

| CE | BW   | WW | YW | MK | DOC | CW | RE  | MB  |
|----|------|----|----|----|-----|----|-----|-----|
| 13 | -0.7 | 62 | 91 | 14 | 10  | 35 | .36 | .29 |

This dude is named right – MVP covers all the bases. He is super correct, easy fleshing and out of our best SEGA 8A (Alp) daughter.

6

**BRNK 1853M**

Commercial Balancer  
Red, Double Polled  
DOB: 2-9-24

Birth Weight: 84 - Adj. 205-Day Wt: 628

SEGA 3111J RAIL MR PROBITY M 8114F  
SEGA 311F

SEGA DILLIE 1853D MCBR C-BAR CONTOUR 107X  
SEGA ALLI 1853A

| CE | BW | WW | YW | MK | DOC | CW | RE | MB |
|----|----|----|----|----|-----|----|----|----|
| -  | -  | -  | -  | -  | -   | -  | -  | -  |

Here is a good red bull from Tom Brink. He bought the pick of our red heifers a few years back and he got a good one. The Dille cow brings on a good one every year.

7



### SEGA MAGA 31M

Balancer - 50% GV  
Double Black, Double Polled  
DOB: 2-12-24

Birth Weight: 83 - Adj. 205-Day Wt: 631

OVER JINGLE 405J

RROG OVER FINAL LINE 16F  
OGSG BREE 4208B

SEGA 311G

OGSG OVERTIME 175D  
SEGA TAYLOR MADE 311T

| CE | BW   | WW | YW | MK | DOC | CW | RE  | MB  |
|----|------|----|----|----|-----|----|-----|-----|
| 16 | -2.0 | 64 | 97 | 22 | 13  | 23 | .26 | .18 |

MAGA is a really cool made Jingle calf out of an Overtime daughter that traces to the 311 cow family – they are all females that stay in the herd for many years.

8

### SEGA MOOLAH 38M

Balancer - 50% GV  
Double Black, Double Polled  
DOB: 2-13-24

Birth Weight: 83 - Adj. 205-Day Wt: 615

SEGA 3111J

RAIL MR PROBITY M 8114F  
SEGA 311F

SEGA 38E

OGSG CARE FREE 110C  
BAG MISS BACK TRACK 38X

| CE | BW   | WW | YW | MK | DOC | CW | RE  | MB  |
|----|------|----|----|----|-----|----|-----|-----|
| 13 | -0.3 | 64 | 94 | 17 | 12  | 21 | .28 | .27 |

This is definitely a mama cow maker deluxe! Look at his stayability EPD in the top 1% of the breed, his sire 3111J is our go to for making the keeping kind of heifers.

9

### SEGA MARBLE 5060M

Balancer – 63% GV  
Black, Double Polled  
DOB: 2-18-24

Birth Weight: 85 - Adj. 205-Day Wt: 622

BNW PLAINSMAN  
KIP 2118K

BNW PLAINSMAN HOMBRE 0128H  
SEGA EBONY 2317E

BNW PRAIRIE GAL  
5060C

BGGR GRAVITY 803A  
BNW PRAIRIE GAL STAMP 2062Z

| CE | BW  | WW | YW | MK | DOC | CW | RE  | MB  |
|----|-----|----|----|----|-----|----|-----|-----|
| 13 | 0.5 | 65 | 90 | 21 | 11  | 22 | .44 | .24 |

We bought Marbles sire out of the Wilkinson program as a high percentage bull to use on balancer females. The cattle are thick made and will pack the pounds on at weaning.

10

### SEGA MONEY 4954M

Balancer - 63% GV  
Black, Double Polled  
DOB: 2-19-24

Birth Weight: 82 - Adj. 205-Day Wt: 639

OVER JINGLE 405J

RROG OVER FINAL LINE 16F  
OGSG BREE 4208B

SEGA 495D

JRI EXTRA EXPOSURE 285L71  
SEGA SNAZZIE 495S

| CE | BW   | WW | YW | MK | DOC | CW | RE  | MB  |
|----|------|----|----|----|-----|----|-----|-----|
| 14 | -1.2 | 59 | 94 | 18 | 12  | 25 | .38 | .09 |

You will notice the calving ease EPDs on our bulls are all above average – this is by design as none of us producers have the time or patience for calving problems. This guy's dam is a good producer.





**11****GATU MOJITO 736M**

Balancer - 68% GV  
Double Black, Double Polled  
DOB: 2-20-24

Birth Weight: 60 - Adj. 205-Day Wt: 590

GATU JET 2237J

GRU MR IMPACT 921E  
SEGA ENVY 2237E

BMCE MAC EMPRESS 736E

BTBR NEVADA 1170Y  
BMCE TM EMPRESS 136Y

| CE | BW   | WW | YW  | MK | DOC | CW | RE  | MB  |
|----|------|----|-----|----|-----|----|-----|-----|
| 14 | -0.4 | 68 | 104 | 23 | 14  | 26 | .32 | .07 |

Out of another 7 year old dam with a great udder, nursed him and his twin this year for 8 months before weaning. Also out of our home raised purebred black bull. He is built right, straight and thick.

**12****SEGA MASTER PLAN 340M**

Balancer - 50% GV  
Double Black, Double Polled  
DOB: 2-25-24

Birth Weight: 88 - Adj. 205-Day Wt: 611

BNW PLAINSMAN  
KIP 2118K

BNW PLAINSMAN HOMBRE 0128H  
SEGA EBONY 2317E

SEGA 340C

SCHIEFELBEIN EFFECTIVE 61  
BRNK DUNIN TIME 340A

| CE | BW   | WW | YW  | MK | DOC | CW | RE  | MB  |
|----|------|----|-----|----|-----|----|-----|-----|
| 15 | -0.7 | 69 | 102 | 25 | 12  | 28 | .43 | .40 |

Master Plan is well named, extremely attractive and travels great. His Effective dam has been a super cow here at SEGA. She was one of the first to calve this spring and has another good one this year.

**14****SEGA MOGUL 746M**

Balancer - 75% GV  
Double Black, Double Polled  
DOB: 2-27-24

Birth Weight: 84 - Adj. 205-Day Wt: 601

BNW PLAINSMAN  
KIP 2118K

BNW PLAINSMAN HOMBRE 0128H  
SEGA EBONY 2317E

RROG ELIZABETH  
746E

GGGE 3G ZIP LINE 266Z  
RROG BOUNTIFUL 496B

| CE | BW   | WW | YW | MK | DOC | CW | RE  | MB  |
|----|------|----|----|----|-----|----|-----|-----|
| 14 | -0.7 | 65 | 91 | 19 | 11  | 20 | .50 | .13 |

Mogul is a maternal machine, his dam Elizabeth came out of the Overmiller herd in Kansas. She has done a great job for us every year.

**15****SEGA MOTIVE 51M**

Balancer - 63% GV  
Double Black, Double Polled  
DOB: 2-28-24

Birth Weight: 88 - Adj. 205-Day Wt: 596

SEGA 3111J

RAIL MR PROBITY M 8114F  
SEGA 311F

SEGA 51A

RID R EASTWOOD 907W  
SEGA SILK STALKINGS 51S

| CE3 | BW  | WW | YW  | MK | DOC | CW | RE  | MB  |
|-----|-----|----|-----|----|-----|----|-----|-----|
| 10  | 2.3 | 68 | 102 | 19 | 13  | 30 | .42 | .23 |

Motive is all bull - really strong topped, thick and just has that look. His sire 3111J is our go to sire long spined. Super correct cattle that can travel and stay in flesh.

**16****SEGA MOJO 615M**

Balancer - 63% GV  
 Red, Double Polled  
 DOB: 2-12-24

Birth Weight: 82 - Adj. 205-Day Wt: 597

SEGA 3111J RAIL MR PROBITY M 8114F  
 SEGA 311F

SEGA ZONA 615Z SEGA GKS EXTRA SPECIAL 820H  
 SEGA SLINKY 615S

| CE | BW  | WW | YW | MK | DOC | CW | RE  | MB  |
|----|-----|----|----|----|-----|----|-----|-----|
| 13 | 0.3 | 63 | 92 | 16 | 13  | 22 | .32 | .22 |

This is a good 63% red bull that puts it all together well. We can't say enough good about his sire 3111J, his dam is coming 13 this spring and shows no sign of slowing down.

**17****SEGA MATCH POINT 775M**

Balancer - 50% GV  
 Double Black, Double Polled  
 DOB: 3-3-24

Birth Weight: 88 - Adj. 205-Day Wt: 637

BNW PLAINSMAN BNW PLAINSMAN HOMBRE 0128H  
 KIP 2118K SEGA EBONY 2317E

SEGA ZAPPY 775Z DAY 8005 NEW DAY 705  
 SEGA RANCIE 775R

| CE | BW  | WW | YW | MK | DOC | CW | RE  | MB  |
|----|-----|----|----|----|-----|----|-----|-----|
| 14 | 1.0 | 68 | 97 | 26 | 11  | 24 | .33 | .27 |

Here is a super complete calf tracing back to the 775 cow family. The 775s are second to none for stayability and longevity, we wish we had more 775 blood in our herd as they are moneymakers.

**18****SEGA MATERNAL 8564M**

Balancer - 63% GV  
 Red, Double Polled  
 DOB: 3-3-24

Birth Weight: 77 - Adj. 205-Day Wt: 617

BNW PLAINSMAN BNW PLAINSMAN HOMBRE 0128H  
 KIP 2118K SEGA EBONY 2317E

SEGA 856F SEGA COLD AS ICE 3115C  
 SEGA DALLIE 1856D

| CE | BW   | W  | YW | MK | DOC | CW | RE  | MB  |
|----|------|----|----|----|-----|----|-----|-----|
| 15 | -2.0 | 59 | 85 | 19 | 13  | 19 | .34 | .31 |

This is a great red calving ease prospect, smooth made and light birthweight. His dam is just one of the quiet girls that does her job without a hitch year in and year out.

**19****SEGA MO BETTA 2312M**

Balancer - 75% GV  
 Double Black, Double Polled  
 DOB: 3-5-24

Birth Weight: 87 - Adj. 205-Day Wt: 664

OVER JINGLE 405J RROG OVER FINAL LINE 16F  
 OGSG BREE 4208B

SEGA 2312G GRU MR IMPACT 921E  
 SEGA ZUNI 2312Z

| CE | BW   | WW | YW  | MK | DOC | CW | RE  | MB  |
|----|------|----|-----|----|-----|----|-----|-----|
| 15 | -1.0 | 66 | 100 | 20 | 11  | 25 | .44 | .09 |

I try not to reveal my pick of the bulls but man this one is an eye catcher! His Mr. Impact dam is huge bodied, perfect uddered and always in flesh. This dude will sire great feeding steers and daughters to keep.

20

**SEGA MOONSHINE 22M**

Balancer - 50% GV  
Red, Double Polled  
DOB: 3-6-24

Birth Weight: 82 - Adj. 205-Day Wt: 608

SEGA 3111J

RAIL MR PROBITY M 8114F  
SEGA 311F

SEGA 22B

RED FINALLY TIME 06  
SEGA XYZA 22X

| CE | BW  | WW | YW  | MK | DOC | CW | RE  | MB  |
|----|-----|----|-----|----|-----|----|-----|-----|
| 13 | 0.3 | 67 | 105 | 18 | 12  | 30 | .32 | .28 |

Here is a super Red 51% Balancer - he sure has the look that his sire known around there as Dufas passes on. His dam the 22B is one of our last Eastwood daughters.

21

**SEGA MARVEL 405M**

Balancer - 50% GV  
Red, Double Polled  
DOB: 3-7-24

Birth Weight: 81 - Adj. 205-Day Wt: 613

SEGA 3111J

RAIL MR PROBITY M 8114F  
SEGA 311F

SEGA 405Y

RID R EASTWOOD 907W  
LDR PRECISION 405

| CE | BW   | WW | YW | MK | DOC | CW | RE  | MB  |
|----|------|----|----|----|-----|----|-----|-----|
| 14 | -0.8 | 60 | 90 | 19 | 12  | 28 | .23 | .27 |

These good red balancers are few and far between. This dude and the previous one in the catalog are truly a matched pair. If you like them stylish, thick and all looking the same take this pair of bulls home.

22

**SEGA MAINLINE 1852M**

Balancer - 75% GV  
Black, Double Polled  
DOB: 3-10-24

Birth Weight: 82 - Adj. 205-Day Wt: 600

BNW PLAINSMAN  
KIP 2118K

BNW PLAINSMAN HOMBRE 0128H  
SEGA EBONY 2317E

SEGA 1852B

JCGR BAR GT PANCHO 8Z  
SEGA ZEST 1852Z

| CE | BW   | WW | YW | MK | DOC | CW | RE  | MB  |
|----|------|----|----|----|-----|----|-----|-----|
| 16 | -2.4 | 57 | 75 | 23 | 12  | 16 | .37 | .23 |

Mainline has great calving ease EPDs, he walks out correct and knowing the productivity of his dam he will sire the "Keeping" kind.



**23****SEGA MUCHO 34M**

Balancer - 75% GV  
 Red, Double Polled  
 DOB: 3-16-24

Birth Weight: 84 - Adj. 205-Day Wt: 649

BNW PLAINSMAN  
 KIP 2118K

BNW PLAINSMAN HOMBRE 0128H  
 SEGA EBONY 2317E

SEGA RED 034X

SEGA SMOOCH 6812S  
 PLA FREEDOMS KASEY 034K

| CE | BW   | WW | YW | MK | DOC | CW | RE  | MB  |
|----|------|----|----|----|-----|----|-----|-----|
| 14 | -0.7 | 63 | 90 | 21 | 12  | 25 | .42 | .16 |

The 34 cow family is known for longevity around there - they are easy keeping, fertile cows that never disappoint. This bull is very correct in his structure.

***Check out the Bull Videos!  
 Youtube:***

***SEGA Gelbvieh –  
 Bull Sale March 8, 2025***

**GELBVIEH****24****GATU MAGNUM 348M**

Gelbvieh  
 Double Black, Double Polled  
 DOB: 2-17-24

Birth Weight: 84 - Adj. 205-Day Wt: 587

GATU JET 2237J

GRU MR IMPACT 921E  
 SEGA ENVY 2237E

SEGA FARYN 348F

OGSG CARE FREE 110C  
 SEGA RED 034X

| CE | BW   | WW | YW | MK | DOC | CW | RE  | MB  |
|----|------|----|----|----|-----|----|-----|-----|
| 14 | -2.0 | 56 | 84 | 17 | 12  | 25 | .52 | .01 |

Dam is a 7 year old SEGA cow that started our herd, great udder, throws a great calf every year. We have kept every one of her heifers over the years. Sire is home raised, thick, well-muscled bull. Magnum has a 14 CED, built right with thick middle.

**25****GATU MONEYLINE 348KM**

Gelbvieh  
 Double Black, Double Polled  
 DOB: 3-18-24

Birth Weight: 89 - Adj. 205-Day Wt: 735

GATU JET 2237J

GRU MR IMPACT 921E  
 SEGA ENVY 2237E

GATU KACI 348K

JRI TRUMP 270W13B  
 SEGA FARYN 348F

| CE | BW  | WW | YW | MK | DOC | CW | RE  | MB   |
|----|-----|----|----|----|-----|----|-----|------|
| 13 | 0.0 | 67 | 96 | 22 | 13  | 29 | .65 | -.05 |

Dam is a first calf heifer, she is the calf of our 7 year old dam of Magnum, great family of females in this line, long stayability, we have kept all her heifers for our herd, 13CED.

# HEIFERS

**26-30**

**Group of five Black Commercial Heifer Calves – right out of our replacement pen.**

**31-35**

**Group of five Commercial Heifer Calves - right out of Gallatin's replacement pen.**

## Bull Selection Guide:

Use this guide to help you decide what type of bull may work best with your current cowherd makeup. An "X" marks our suggested bull type.

| My Cowherd Makeup   | Purebred or High Percentage Balancer | Mid-Range Balancer | Low Percentage Balancer |
|---|--------------------------------------|--------------------|-------------------------|
| Mostly British-based (Angus, Red Angus, or Hereford)                      | X                                    | X                  |                         |
| Equal blend of Continental and British Breeds                             | X                                    | X                  | X                       |
| High percentage Continental (Gelbvieh, Limousin, Charolais, or Simmental) |                                      | X                  | X                       |

**Purebred Gelbvieh or High Percentage Balancer is 63% Gelbvieh or higher. These bulls will add muscle and red meat yield along with great maternal values.**

**Mid-Range Balancers are 38% to 63% Gelbvieh. Use these bulls to maintain feedlot performance and carcass value, without losing the maternal edge.**

**Low Percentage Balancer is 38% Gelbvieh or less. Use these bulls to add carcass value and calving ease.**

## PAP Risk Factor

Moderate Elevation Test Chart  
PAP Test Conducted at Elevation 4000-5500 ft.  
(70% Repeatable, Predictive Value)

| PAP Score | Use at Low Elev.<br>(<4000 feet) | Use at Moderate Elev.<br>(4000-5500 feet) | Use at High Elev.<br>(5500 – 7500 feet) | Use at Extreme<br>(>7500 feet) |
|-----------|----------------------------------|---|---|--------------------------------|
| 34-39     | Low Risk                         | Low Risk                                  | Low Risk                                | Low Risk                       |
| 40-45     | Low Risk                         | Low Risk                                  | Moderate Risk                           | Moderate Risk                  |
| 46-49     | Moderate Risk                    | Moderate Risk                             | High Risk                               | High Risk                      |
| ≥50       | Moderate Risk                    | High Risk                                 | Do Not Use                              | Do Not Use                     |

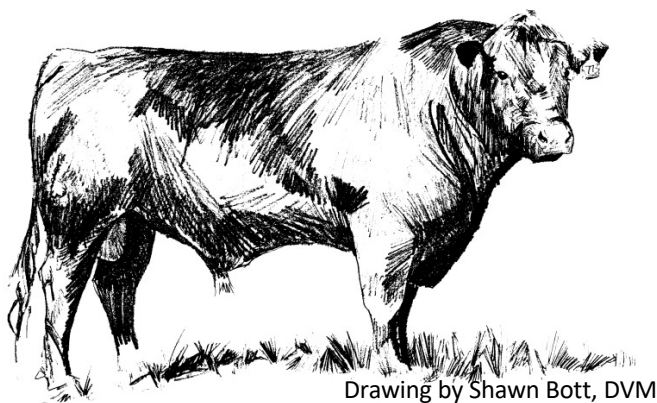
## Care of your yearling bulls:

We would encourage you to take a little extra special care of your investment(s). Yearling bulls are still growing and we all expect a lot out of them. Limit the breeding season and number of cows that they will have to service. Do not turn young bulls out in the same pasture with mature bulls. A yearling in good condition can be expected to service 15-25 cows in his first season, but he will need to be brought in early and given a little extra care after all that work. Yearlings will start losing their teeth at 15 to 18 months of age and need a little **TLC** if you expect them to grow and develop to their full potential. A little extra care up front will make your purchases last a lot longer and also make for healthier, better bulls down the trail!

When you first turn your bulls out, watch them and make sure that they are getting the job at hand done. Also, if they start getting a little run down rest them or give them a little extra energy, it will pay dividends in the long run!

## Herd Health Program:

|   |   |
|---|---|
| <b>Birth</b>                                  | 7-Way and Inforce                                 |
| <b>Branding</b>                               | Bovishield Gold 5, 7-Way                          |
| <b>Pre-Weaning</b>                            | Bovishield Gold 5, One Shot                       |
| <b>Weaning</b>                                | Bovishield Gold-5, 7-Way with Somnus, Multimin 90 |
| <b>At Semen Test</b>                          | BoviShield Gold VL5                               |
| <b>Pre-Breeding</b>                           | BoviShield Gold VL5                               |
| Parasites controlled with Ivermectin pour-on. |   |



Drawing by Shawn Bott, DVM

**Put a pencil to our bulls,  
you'll like what you see!**